

Model: DFI-0452-WH Motion Security Light

Quick Start Guide

QUICK TIPS

Here are a few good things to know about your new light!



Need a longer cord between the Light and the Solar Panel?

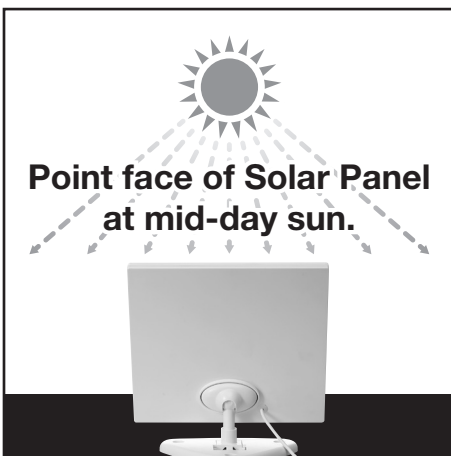
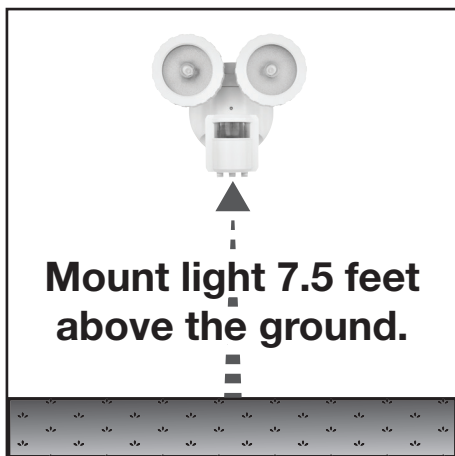
A 30' Extension Cord is available. Contact Home Depot Customer Service for details.



Flashing Indicator Lights:

Blue Light = Charging

Green Light = Motion Detected



3-Minute Test Mode

Whenever the light is turned ON (Auto), it will go into a 3-minute Test mode.



Press
Power Button
to **Auto**



1st Minute
Lamps stay ON

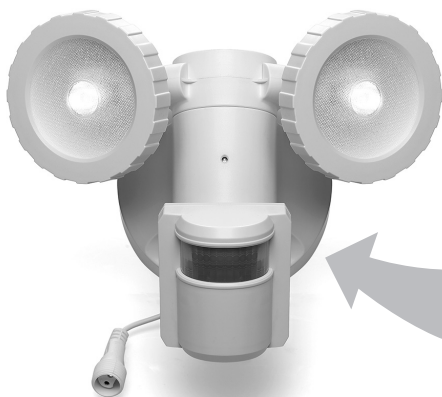


2nd and 3rd Minute
Lamps ON for 30 sec. when motion detected.



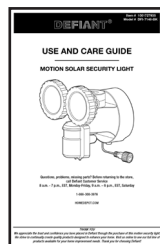
What's in the Box

Everything you need to install and operate the light is in the box.

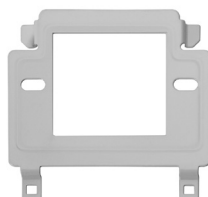


Motion Security Light

Rechargeable Lithium-Ion Battery included and installed.



Use and Care Guide



Mounting Bracket

(May be attached to the back of the Motion Security Light.)



Solar Panel



Set of Screws and Wall Anchors

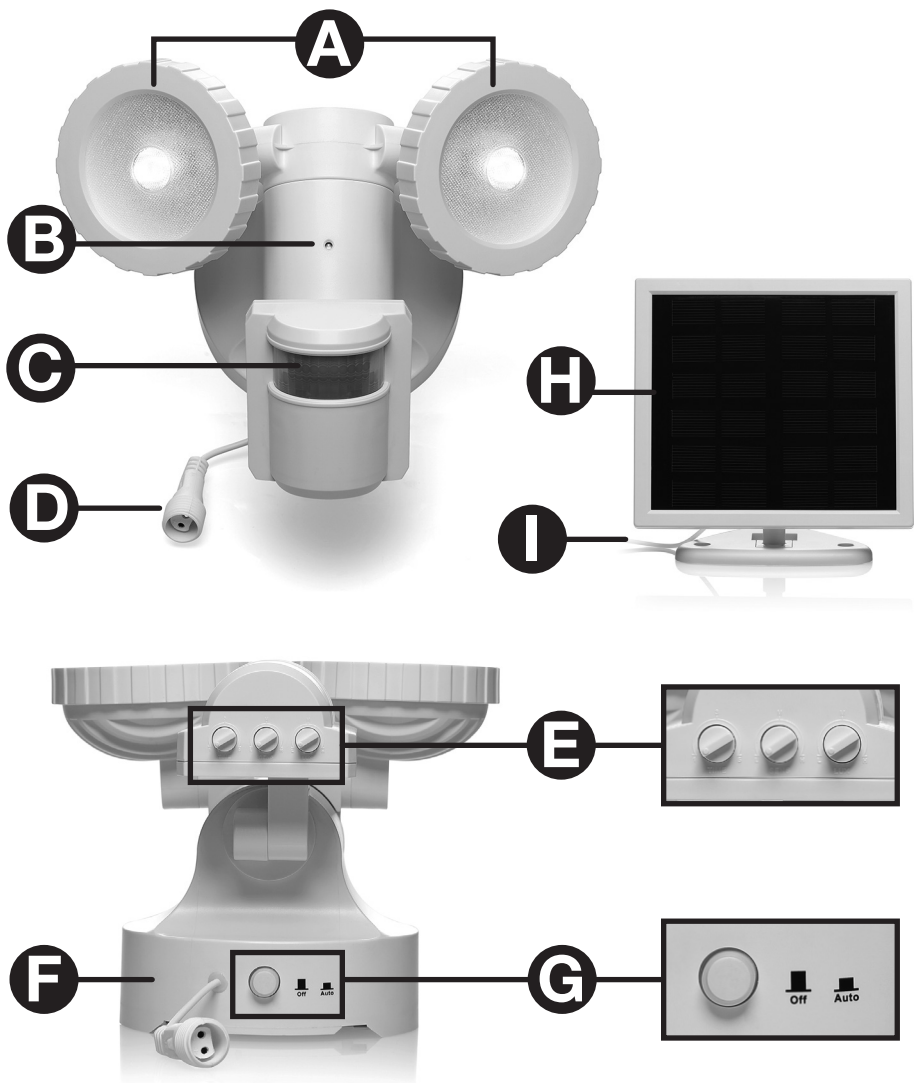
for Mounting Bracket and Cradle



Solar Panel Cradle

Parts of the DFI-0452-WH

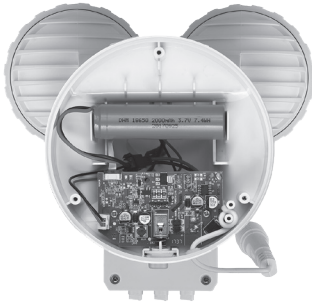
Motion Security Light



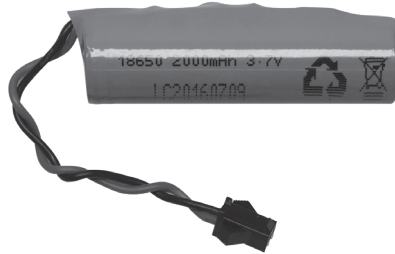
- A** Adjustable LED Lamp Heads
- B** Indicator Light (Green | Blue)
- C** Adjustable Motion Sensor Head
- D** Power Cord to Solar Panel
- E** TIMER / SENS / LUX dials
- F** Light Fixture Base
- G** Power Button (OFF | Auto)
- H** Solar Panel with Cradle attached
- I** Power Cord to Light Fixture

About the Rechargeable Battery

Specifications and Usage



**Battery is installed,
and may have a starting charge.**



The Motion Security Light includes a **2000mAh 3.7V rechargeable Lithium-Ion battery**. It is already installed in the unit, and may have a small charge for testing.

During the day, the battery is charged by solar energy; it take about **6 hours in clear, direct sunlight for the battery to charge to full capacity**.

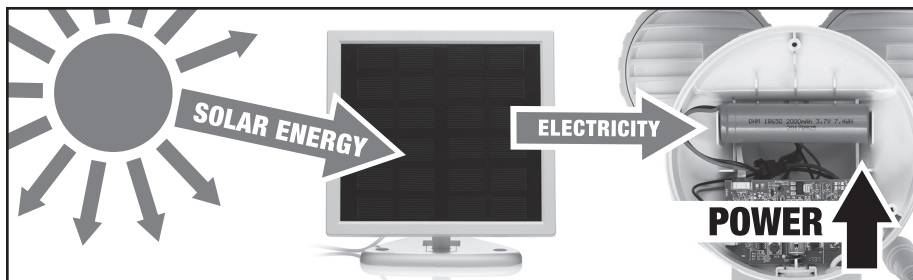
In the evening, when the light switches over to motion-sensing, the battery discharges whenever the light is triggered. **It will discharge for a total of about 2 hours before being depleted**. Once the battery is depleted, the light will stop working until it is charged again the next day.

The battery is exclusively for use in the Defiant DFI-0452-WH, and replacement batteries are available. Contact Home Depot Customer Service at 1-866-308-3976 for details.

How the Light Works

Charge by Day, Light by Night

During the Day...



- Sunlight is converted to energy by Solar Panel **(H)**, and stored in the on-board lithium-ion battery.
- The light will not turn ON, unless LUX is set to High.
- When charging, the Indicator light **(B)** will flash BLUE every 4-6 seconds.

In the Evening...

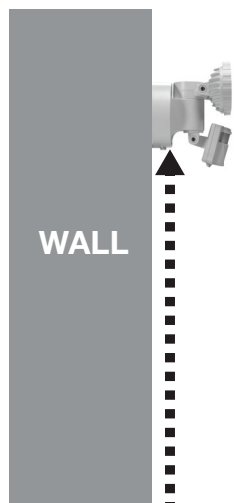


- The Lamp Heads **(A)** turn ON whenever motion is detected by the Motion Sensor **(C)**.
- The light will operate until the lithium-ion battery charge is depleted.
- When the battery runs low, the light will appear dimmer than normal. This is the ECO mode, which allows the light to run longer by reducing brightness.
- The Indicator light will flash GREEN when motion is detected.

Placement of the Light for Optimal Operation

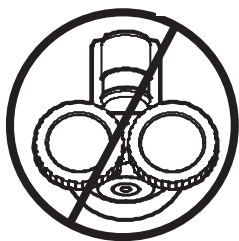
Mount at least 7.5 feet above the ground

You can install the light almost anywhere in an outdoor setting, so long as it can be connected to the Solar Panel **H**.

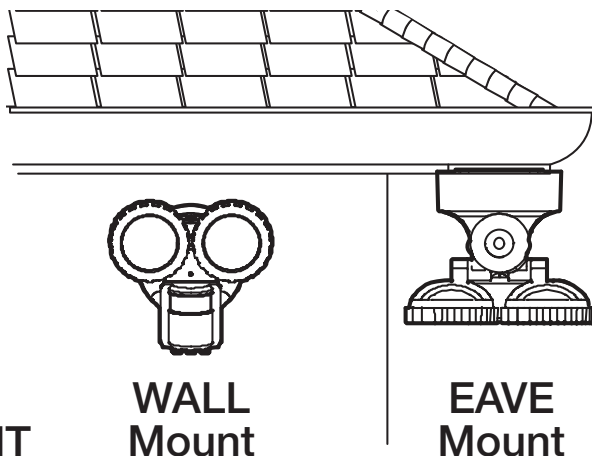


The light works best mounted
7.5 feet above the ground.

Mount on Wall or Eave

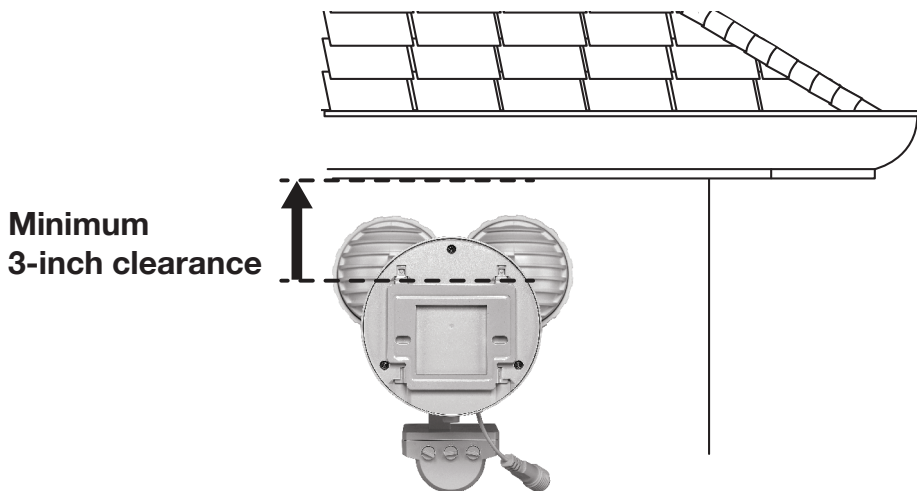


**DO NOT MOUNT
INVERTED**



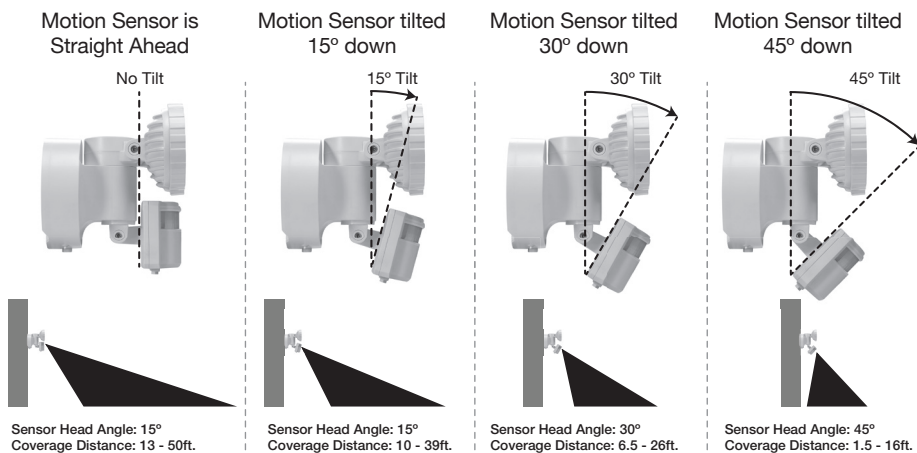
Leave 3 inches of clearance for the Mounting Bracket

When installing the Mounting Bracket, make sure it has at least 3 inches of clearance from the top of the bracket, to the bottom of any edge, overhang or rain-gutter that may impede installation.



Adjust the PIR Motion Sensor Head

Adjust the Motion Sensor Head **C** based on the distance you prefer to detect motion. Adjust SENS **E** accordingly.

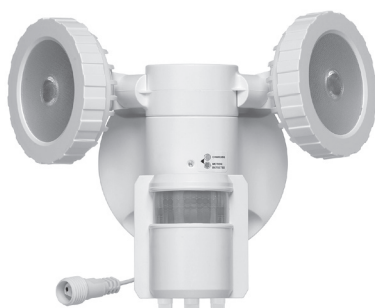


Adjusting Lamp and Motion Sensor Heads

The LED Lamp Heads **A** can be adjusted independantly, and up to 45° from the front-facing position.



Lamp Heads, Front-facing

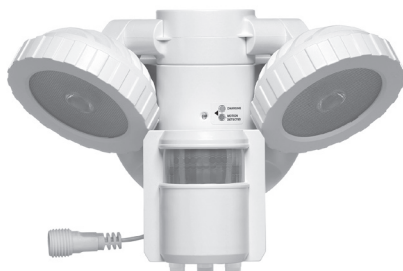


Lamp Heads, Broad Open

Horizontally, the LED Lamp Heads can be independantly adjusted about 135°, as shown.



Lamp Heads at maximum up-facing



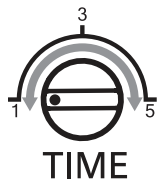
Lamp Heads at maximum down-facing

The Motion Sensor **C** can be adjusted in a side-to-side arch of about 160°, and can be angled 90° downward.

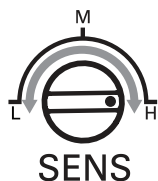


Adjusting TIMER, LUX and SENS Settings

Your Motion Security Light has 3 basic settings, **TIME**, **LUX** and **SENS**.



TIME adjusts the amount of time the light will stay **ON** when triggered by motion. It can be adjusted from 1 to 5 minutes.



SENS adjusts how “sensitive” the PIR is to motion.



SENS

L (Low)

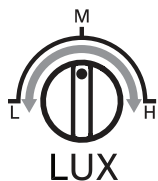
Least sensitive setting.
Good for stairs, door coverage.
Low energy usage.

M (Medium)

Good for small yards,
garages, and patios.

H (High)

Detect motion up to 50' away.
Good for large yards, open areas.
High energy usage.



LUX adjusts the level of light that has to be reached **before the light will activate when motion is detected**. The following settings will activate the light:

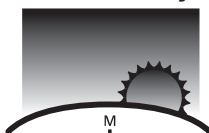
Automatically turns ON **when it's dark.**



Automatically turns ON **just after sunset.**



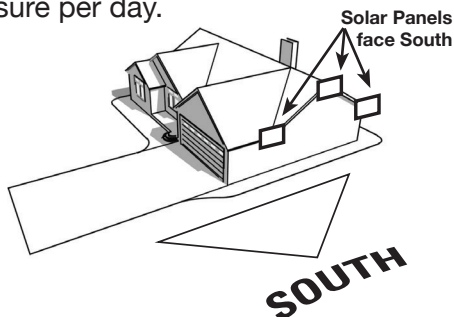
Automatically turns ON **late in the day.**



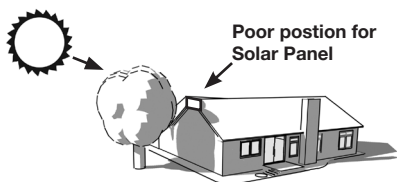
Where to Place the Solar Panel for Optimal Exposure to the Sun

The Solar Panel  should be placed in an area that allows for the maximum amount of sunlight exposure per day.

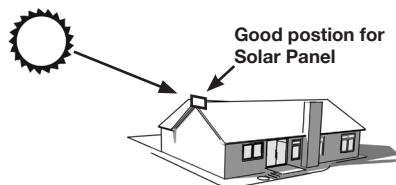
- Solar Panel is best when placed on the southern-facing portion, or the highest point, of a structure.



- The panel should not be placed where shade or shadow is cast upon it by trees, buildings, telephone poles, or other obstructions.



Tree blocks sunlight from Solar Panel.



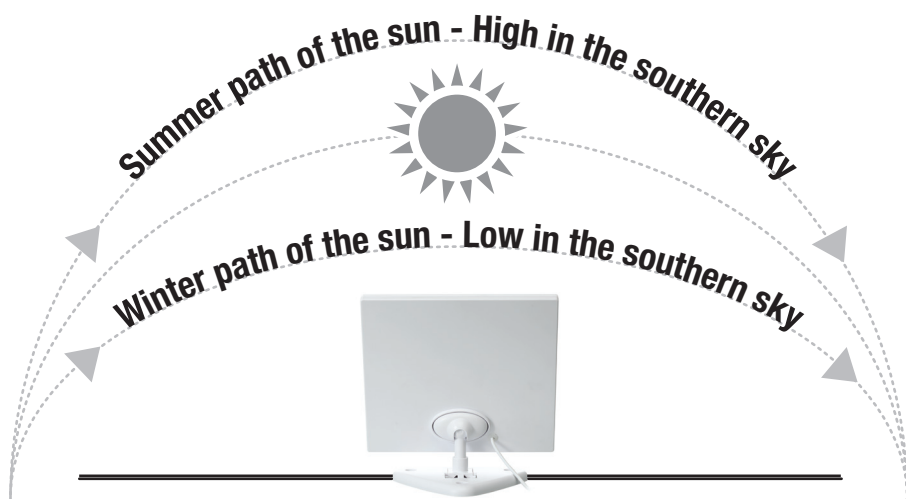
No obstruction - Solar Panel receives full sunlight.

- The Solar Panel has a 15-foot cord for attachment to the Light Fixture. A 30-foot extension cable is available from **shopNovolink.com**. You can use up to 2 extension cables, giving you an additional 60 feet distance between the Solar Panel and the Light.

Click Here to go directly to the
extension cable online at
shopNovolink.com.



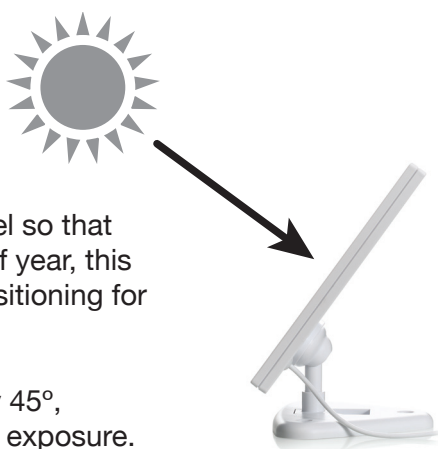
Once installed, the Solar Panel should be angled towards the southern sky, so that the face of the panel is exposed to as much sunlight as possible during the day. (Generally, an upward angle of 45° should be sufficient for exposure.)



Helpful Tip:

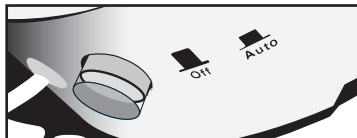
At high noon, adjust the Solar Panel so that it faces the sun. During any time of year, this adjustment will provide optimal positioning for collecting solar energy.

You can also angle the panel up by 45°, which should provide for adequate exposure.



Turning the Light ON for the First Time

1. Make sure the light is properly installed, with the Solar Panel **H** securely connected to the Light.
2. Place the **POWER** button in the **Auto (ON)** position. The light will proceed to the 3-Minute Test mode.



OPTIONAL - Charging with the Power OFF

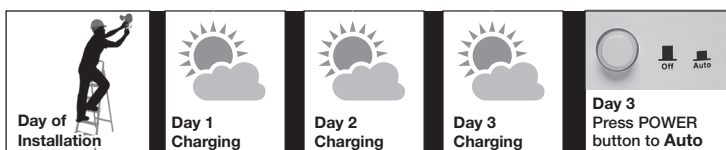
If the light does not immediately go into the 3-minute Test Mode, or if the weather will not permit for charging with full sunlight, you can let the light charge with the Power button in the OFF position.

This may allow the battery to charge slightly faster, as power is not being drawn by the motion sensor when the light is off.

3. Place the **POWER** button in the **OFF** position.
4. You will leave the light **OFF** for 2-3 days, depending on weather conditions.



Cloudy & Overcast Days



5. When ready, place the **POWER** button in the **Auto (ON)** position. It will go into a 3-minute test phase.

It is not necessary for you to interact with the light during the 3-minute test; the light will go through this cycle automatically, and be ready for regular operation when complete.

About the 3-Minute Test

(Test starts anytime you Power the light ON.)

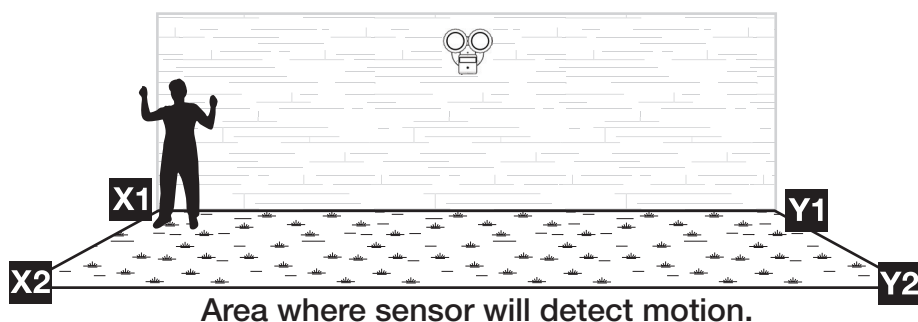
If you have already adjusted the dials, light heads and sensor, you do not have to be present to observe the test.

For the 1st Minute...

The light will stay **ON**, so you can point the LED Lamp Heads **A** in the direction you prefer. When the 1st minute is over, the light will turn OFF.

For the 2nd and 3rd Minute...

The light will turn **ON** for 30-second intervals whenever it's triggered by motion. Use this time to adjust the Motion Sensor Head **C** in the direction you want it to detect motion. Here is a step-by-step process that's efficient for testing the motion sensor.



1. When the light turns OFF, move to the first position **X1**. The light should turn ON when you move, and the Indicator Light **B** flash GREEN.
2. After 30 seconds, the light will turn OFF again, move the to second position **X2**. If the light does not turn ON when you move, adjust the Motion Sensor Head or increase SENS.
3. Repeat this by moving to the 3rd **Y1** and 4th **Y2** positions, waiting to see the light turn ON, and the Indicator Light flash GREEN.

After the **3rd minute**, the light will revert to its **AUTO mode**, and only activate when the motion sensor is triggered, at the LUX level you have selected (or when it is dusk/dark.) **You can continue to make adjustments to the Lamp Heads, Motion Sensor Head, LUX, TIMER and SENS.**

About the Indicator Light

(Blue = Charging • Green = Motion)



Your Motion Security Light has an Indicator light **B** that will help you understand what the unit is doing at any given time.

BLUE Indicator Light, “CHARGING”

- Flashes every 4-6 seconds when unit is charging.
- Indicates that the connection between Solar Panel and Rechargeable Battery is intact.
- Demonstrates battery is functioning properly.

If you do not see the flashing blue light during the day, the battery may be completely charged. If, however, the light does not turn ON in the evening, check the connection between the Solar Panel **I** and the Light unit **F**.

You will not see the Blue indicator light ON at night.

GREEN Indicator Light, “DETECTING MOTION”

- Flashes/Stays ON when motion is detected.
- Flashes during the daylight or at night.
- Indicates that the motion sensor is working, and the battery is charged.

Common Questions and Fixes

Light won't turn ON in the evening

- ☐ Look for the Indicator Light during the day to see if it's **flashing Blue about every 6 seconds**. If so, the solar panel connection and battery are OK. You may need to adjust the SENS setting.
- ☐ Is it below freezing outside? **The battery could be frozen below its operational level**. Lithium-Ion batteries are less efficient in cold/freezing weather. When temperatures warm-up, the battery will return to normal function.
- ☐ It's possible the battery is draining early due to multiple activations and/or a longer stay-on time. **Lower the LUX and SENS settings to medium or low, and reduce the TIMER to 1 minute**, or as low as possible for your use.

Light turns ON during the day

- ☐ Adjust the LUX to Medium (M) or lower. The LUX setting is very sensitive, and at High (H) it will activate the light in bright or daylight conditions.

Light Heads are flashing rapidly

- ☐ Increase the LUX setting about one quarter, for example, from Low (L) to between Low and Medium (M).
- ☐ Reset the unit by turning it OFF, then ON again.

Light doesn't turn ON when I walk in front of it.

- ☐ Conduct any testing (aside from the 3-minute testing) at night or in low-light conditions.
- ☐ For the motion sensor to work properly, the Light Unit needs to be mounted at 7.5 feet above the ground. Having the light lower, on a table or fence, or in a small, enclosed space may reduce the effectiveness of the motion sensor.
- ☐ Increase SENS and adjust the Motion Sensor Head accordingly.

Light does not turn ON when my dog/cat walks in front of or under it.

The motion sensor is not calibrated for small to medium pets or animals.

Think I need a new battery.

If you've had a series of freezing, stormy, overcast or cloudy days, the rechargeable battery may not have been able to store enough of a charge to optimally power the light.

- ☐ Wait until there are clearer skies, and the temperature has reached above freezing.
- ☐ Allow the light to charge in **full sunlight for at least 6 hours**.
- ☐ **Check for the indicator light** for BLUE flashing during the day, or GREEN in the evening. If you see either of these, it's less likely you need a new battery.
- ☐ If you do not see the indicator light flash BLUE during the day, check the solar panel installation, and **make sure the Panel is free of dirt or debris**.

1-Year Limited Manufacturers Warranty

WHAT IS COVERED

This product is guaranteed to be free of factory defective parts and workmanship for a period of 1 year from date of purchase. Purchase receipt is required for all warranty claims.

WHAT IS NOT COVERED

This guarantee does not include repair service, adjustment and calibration due to misuse, abuse or negligence. Unauthorized service or modification of the product or of any furnished component will void this warranty in its entirety. This warranty does not include reimbursement for inconvenience, installation, setup time, loss of use, unauthorized service, or return shipping charges. This warranty is not extended to other equipment and components that a customer uses in conjunction with this product.

No service parts are available for this product.



Keep this QSG, along with a copy of your purchase receipt, accessible for future reference.

**Have Questions about your Defiant DFI-0452-WH
Motion Security Light?**

Home Depot Customer Service
1-866-308-3976